



INSTRUCTION BULLETIN

No. 9013040
Machine: T17 / M17
Published: 07-2016
Rev. 01

NOTE: DO NOT DISCARD the Parts List from the Instruction Bulletin. Place the Parts List in the appropriate place in the machine manual for future reference. Retaining the Parts List will make it easier to reorder individual parts and will save the cost of ordering an entire kit.

NOTE: Numbers in parenthesis () are reference numbers for parts listed in Bill of Materials.

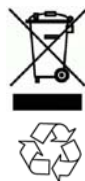
Installation instructions for **kit number 9020301 (T17 machines NA serial numbers 000000-010999 / EU serial numbers 0000-0330) / 9014967 (T17 machines NA serial numbers 011000- / EU serial numbers 0400-) (All M17 machines)**

SYNOPSIS:

This kit contains the parts needed to install a solution auto-fill kit on T17 scrubbers / M17 sweeper-scrubbers without the optional ES system.
Please follow step-by-step instructions.

SPECIAL TOOLS / CONSIDERATIONS: NONE

(Estimated time to complete: 2 hours)



PROTECT THE ENVIRONMENT

Please dispose of packaging materials, used machine components such as batteries and fluids in an environmentally safe way according to local waste disposal regulations.

Always remember to recycle.

PREPARATION:

1. Completely empty the solution tank and the recovery tank. Refer to the Operator Manual for instructions how to empty both tanks.
2. Park the machine on a clean level surface, completely lower the scrub head, turn off the machine, set the parking brake, and remove the key.

FOR SAFETY: Before leaving or servicing machine, stop on level surface, turn off machine, and remove key.

3. Disconnect the battery cable from the machine.



WARNING: Always disconnect battery cables from machine before working on electrical components.

INSTALLATION:

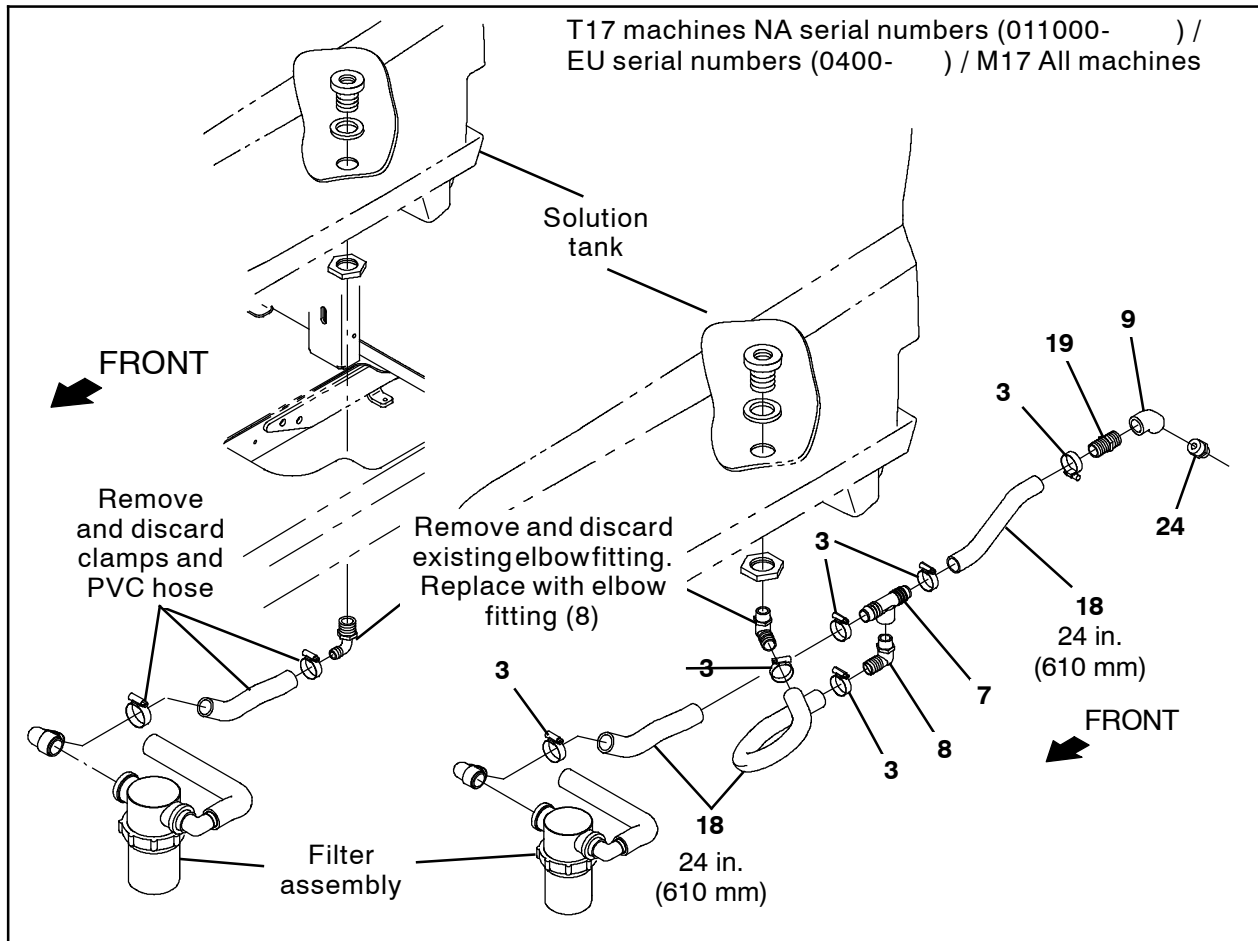


FIG. 1

NOTE: Refer to Step 1 through Step 11 to install fittings / hoses onto T17 machines NA serial numbers (011000-) / EU serial numbers (0400-) / M17 All machines

1. Remove the existing elbow fitting the PVC hose routed between the filter assembly and elbow fitting from the bottom of the recovery tank. Discard the elbow fitting, PVC hose, and hose clamp. (Fig. 1)
2. Thread one plastic elbow fitting (8) into the bulkhead fitting in the solution tank. (Fig. 1)
3. Use a hose clamp (3) to connect a 24 in. (610 mm) PVC hose (18) to the plastic elbow fitting (8) installed into the bulkhead fitting in the previous step. (Fig. 1)
4. Use a hose clamp (3) to connect a 24 in. (610 mm) PVC hose (18) to the filter assembly. (Fig. 1)
5. Thread one plastic elbow fitting (8) into the plastic t- fitting (7). (Fig. 1)
6. Use a hose clamp (3) to connect the 24 in. (610 mm) PVC hose (18) from the filter assembly to the plastic t- fitting (59). (Fig. 1)
7. Use a hose clamp (3) to connect the 24 in. (610 mm) PVC hose (18) from the plastic elbow fitting (8) installed in the bulkhead fitting to the plastic elbow fitting (8) in the plastic t- fitting (7). (Fig. 1)
8. Use a hose clamp (3) to connect the 24 in. (610 mm) PVC hose (18) to the plastic t- fitting (59). (Fig. 1)
9. Thread plastic straight fittings (19) and (24) into the 45° elbow fitting (9). (Fig. 1)
10. Use a hose clamp (3) to connect the elbow fitting assembly assembled in the previous step to the 24 in. (610 mm) PVC hose (18). (Fig. 1)
11. Proceed to Step 18.

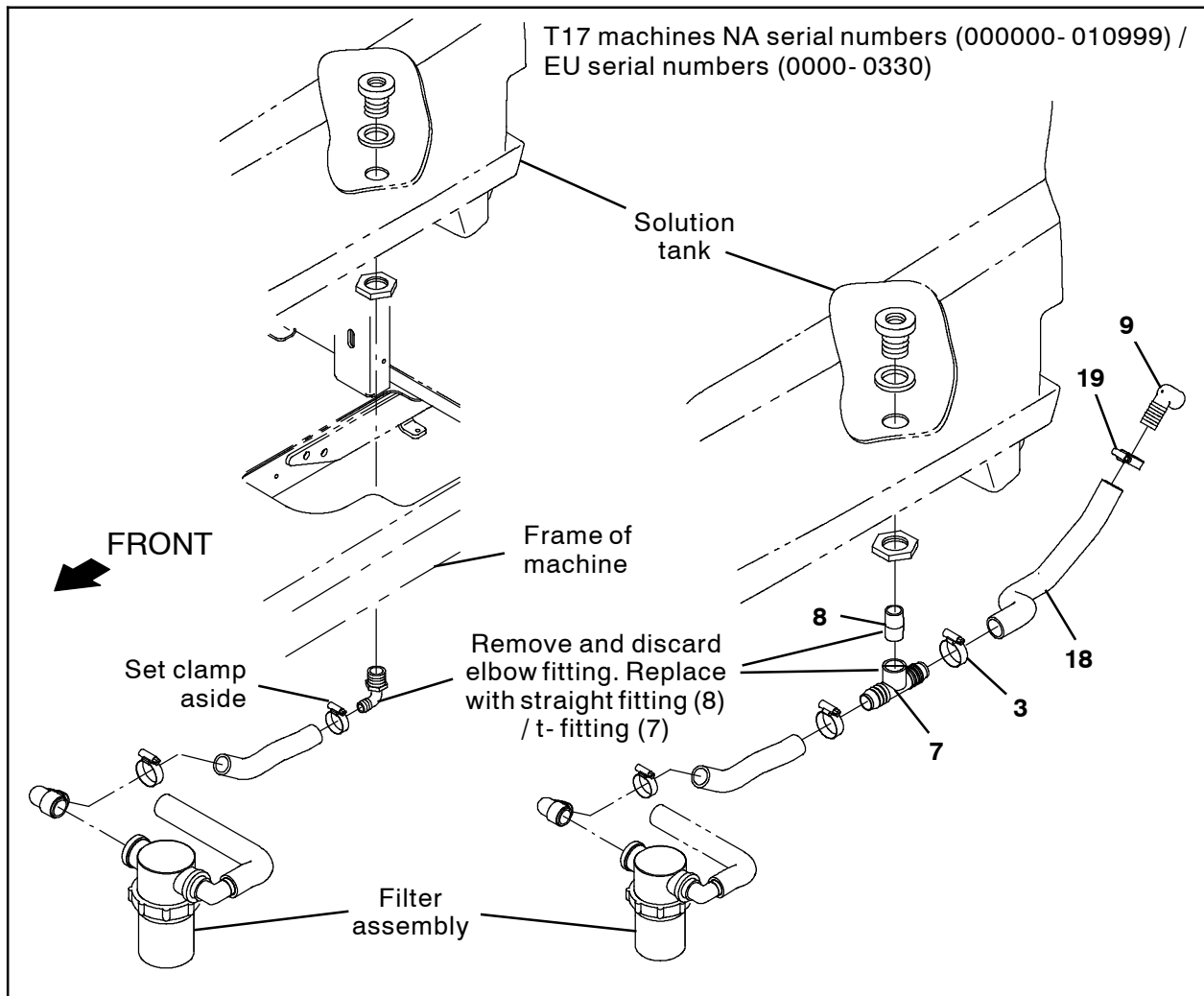


FIG. 2

NOTE: Refer to Step 12 through Step 17 to install fittings / hoses onto T17 machines NA serial numbers (000000- 010999) / EU serial numbers (0000- 0330).

12. Loosen the hose clamp securing the hose from the filter assembly to the elbow fitting installed on the bottom of the solution tank. (Fig. 2)
13. Thread the straight fitting (8) into the t-fitting (7). (Fig. 2)
14. Install the straight fitting (8) / t-fitting (7) into the solution tank. (Fig. 2)
15. Connect the hose from the filter assembly to the t-fitting (7). (Fig. 2)
16. Use a hose clamp (19) to connect the 24 in. (610 mm) PVC hose (18) to the t-fitting (7). (Fig. 2)
17. Use a hose clamp (19) to connect the elbow fitting (9) to the 24 in. (610 mm) PVC hose (18) connected to the t-fitting (7). (Fig. 2)

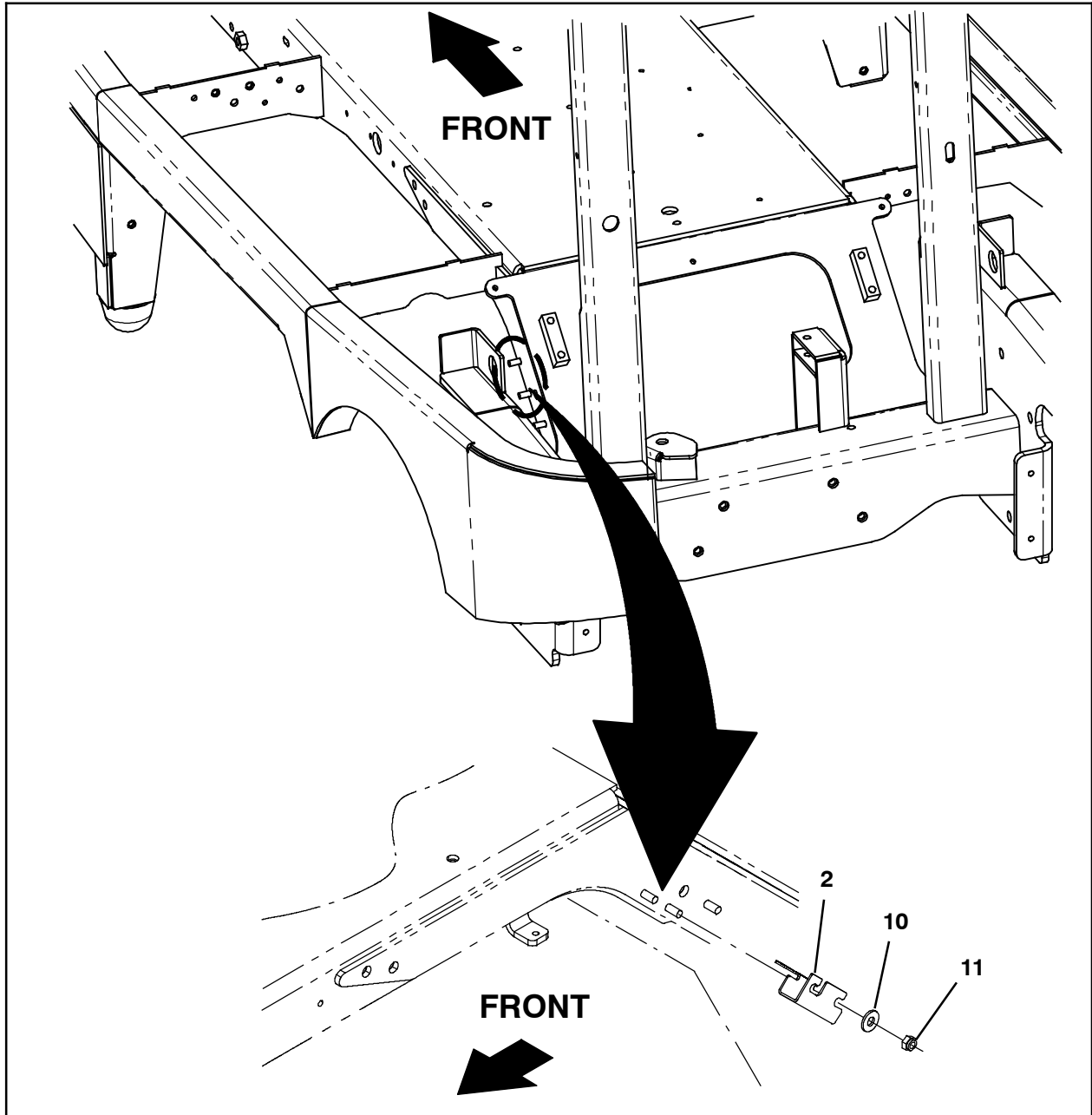


FIG. 3

18. Use two M8 hex nuts (11) and two flat washers (10) to install the auto-fill bracket (2) onto the frame of the machine. (Fig. 3)

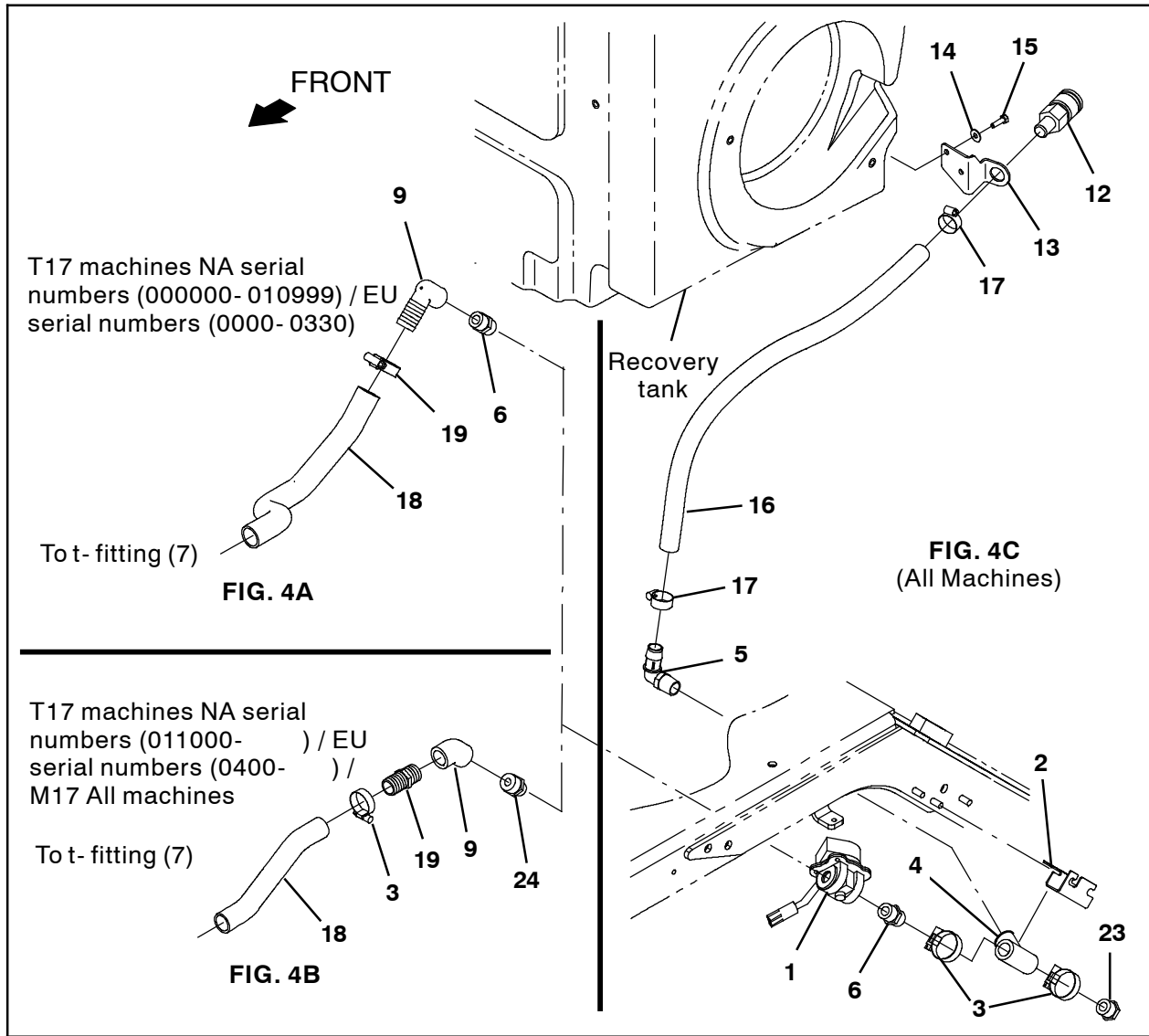


FIG. 4

19. Thread a plug fitting (23) into the plastic t-fitting (4). (Fig. 4C)
20. Thread two plastic straight fittings (6) into the water solenoid valve (1). (Fig. 4A / Fig. 4C)
21. Thread two plastic straight fittings (6) and (24) into the water solenoid valve (1). (Fig. 4B / Fig. 4C)
22. Thread the water solenoid valve (1) onto the t-fitting (4). (Fig. 4C)
23. Thread the water solenoid valve (1) / plastic t-fitting (4) assembly from the previous several steps onto the elbow fitting (9) attached to the 24 in. (610 mm) PVC hose (18). (Fig. 4A / Fig. 4C or Fig. 4B / Fig. 4C)
24. Thread the elbow fitting (5) into the t-fitting (4). (Fig. 4C)
25. Use two hose clamps (3) to secure the plastic t-fitting (4) into the auto-fill bracket (2). Orient the plastic t-fitting as shown. (Fig. 4C)
26. Use a hose clamp (17) to connect the PVC hose (16) to the elbow fitting (5). (Fig. 4C)
27. Use two M6 hex screws (15) and two flat washers (14) to install the QDC fitting bracket (13) onto the recovery tank. (Fig. 4C)
28. Route the PVC hose (16) to the QDC fitting bracket (13) and cut the PVC hose to length. (Fig. 4C)
29. Install the brass QDC fitting (12) into the QDC fitting bracket (13) and use a hose clamp (17) to connect the PVC hose (16) to the brass QDC fitting and secure the brass QDC fitting to the QDC fitting bracket. (Fig. 4C)

30. Connect the main wire harness to the water solenoid valve (1). (Fig. 4 / Fig. 6 / Fig. 7)
31. Thread the brass garden hose fitting (20) onto the hose to be used to supply water to the machine auto-fill system. (Fig. 5)

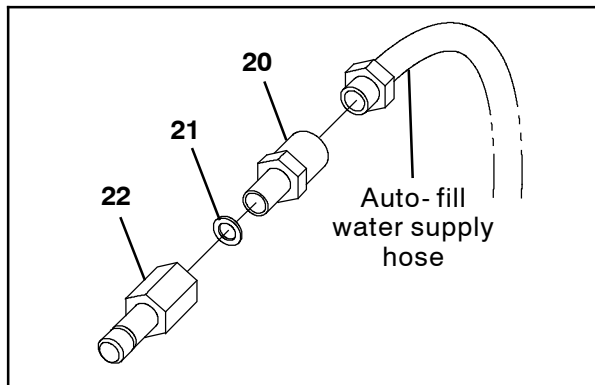


FIG. 5

32. Insert the rubber washer (21) into the brass QDC fitting (22). (Fig. 5)
33. Thread the brass QDC fitting (22) onto the brass garden hose fitting (20). (Fig. 5)
34. Reconnect the battery cable to the machine.
35. Start and test the machine. Connect the supply hose to the auto-fill connection, and turn the key switch to the ON position to begin filling the tank(s). Check all hose / fitting connections for leaks. Ensure the solution tank is filled to the correct level after the auto-fill system has completed the fill process. Refer to the Operator Manual for additional information.

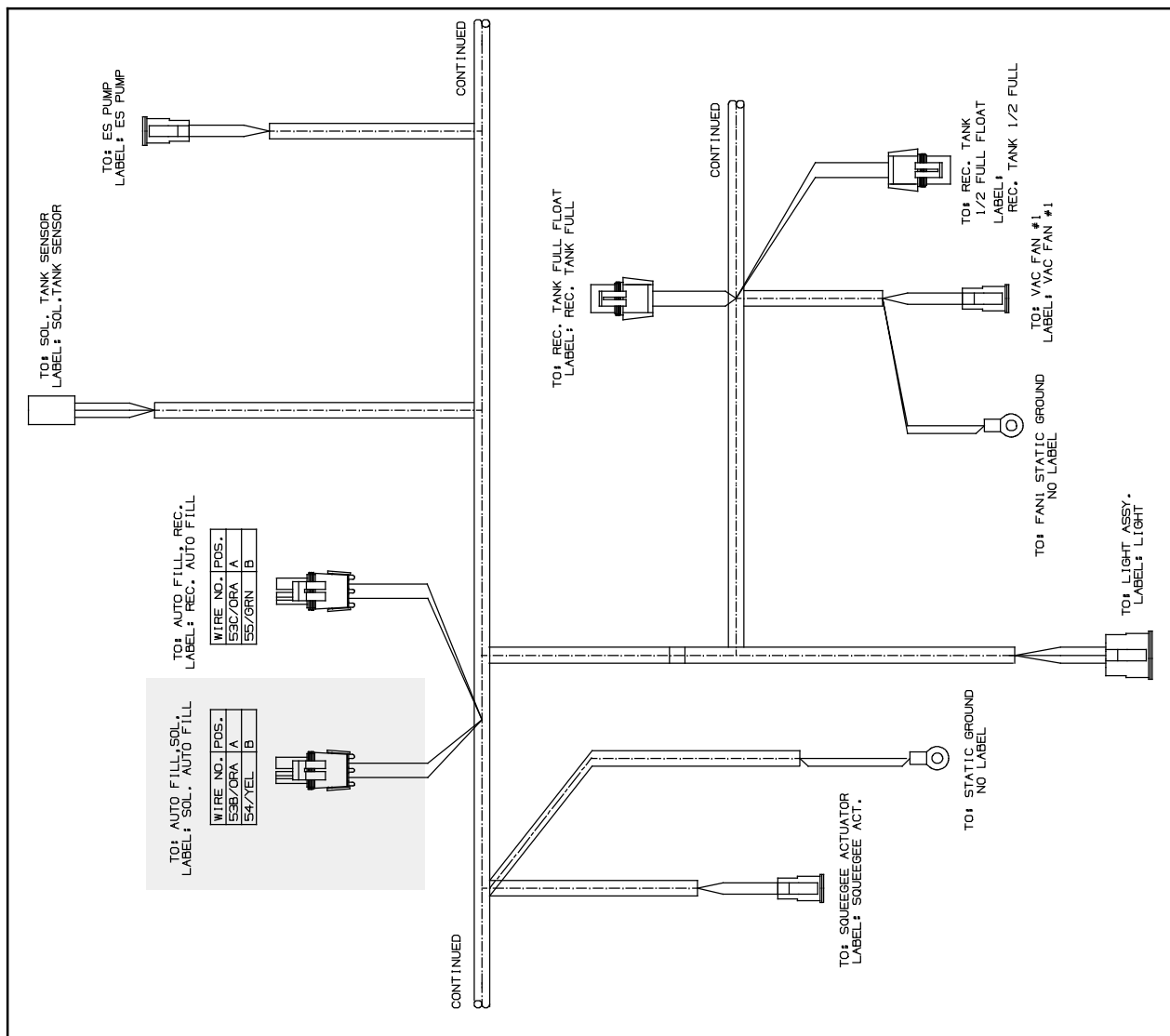


FIG. 6

T17 machines NA serial numbers (011000-) /
EU serial numbers (0400-) / M17 All machines

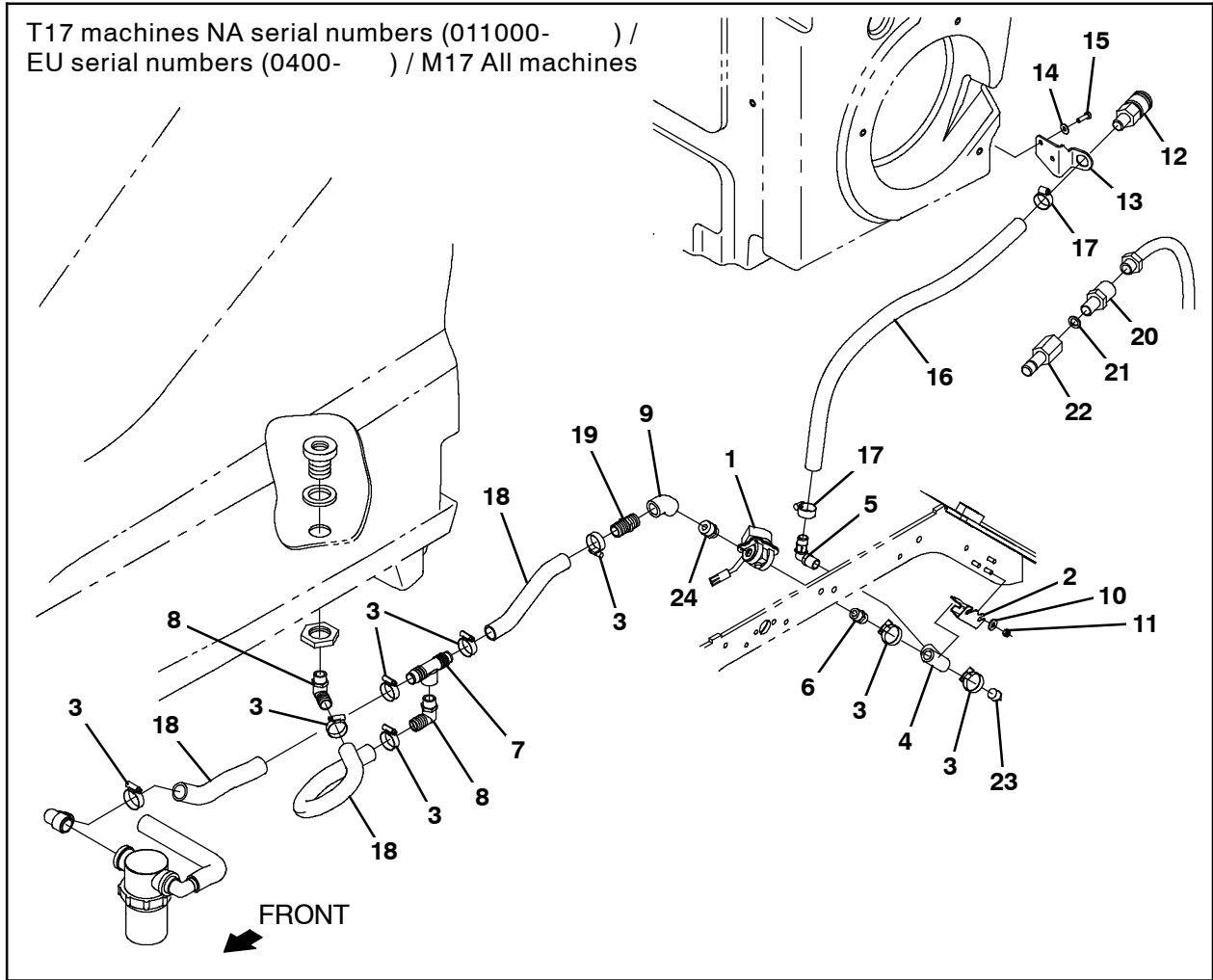


FIG. 8

T17 machines NA serial numbers
(000000- 010999) / EU serial numbers
(0000- 0330)

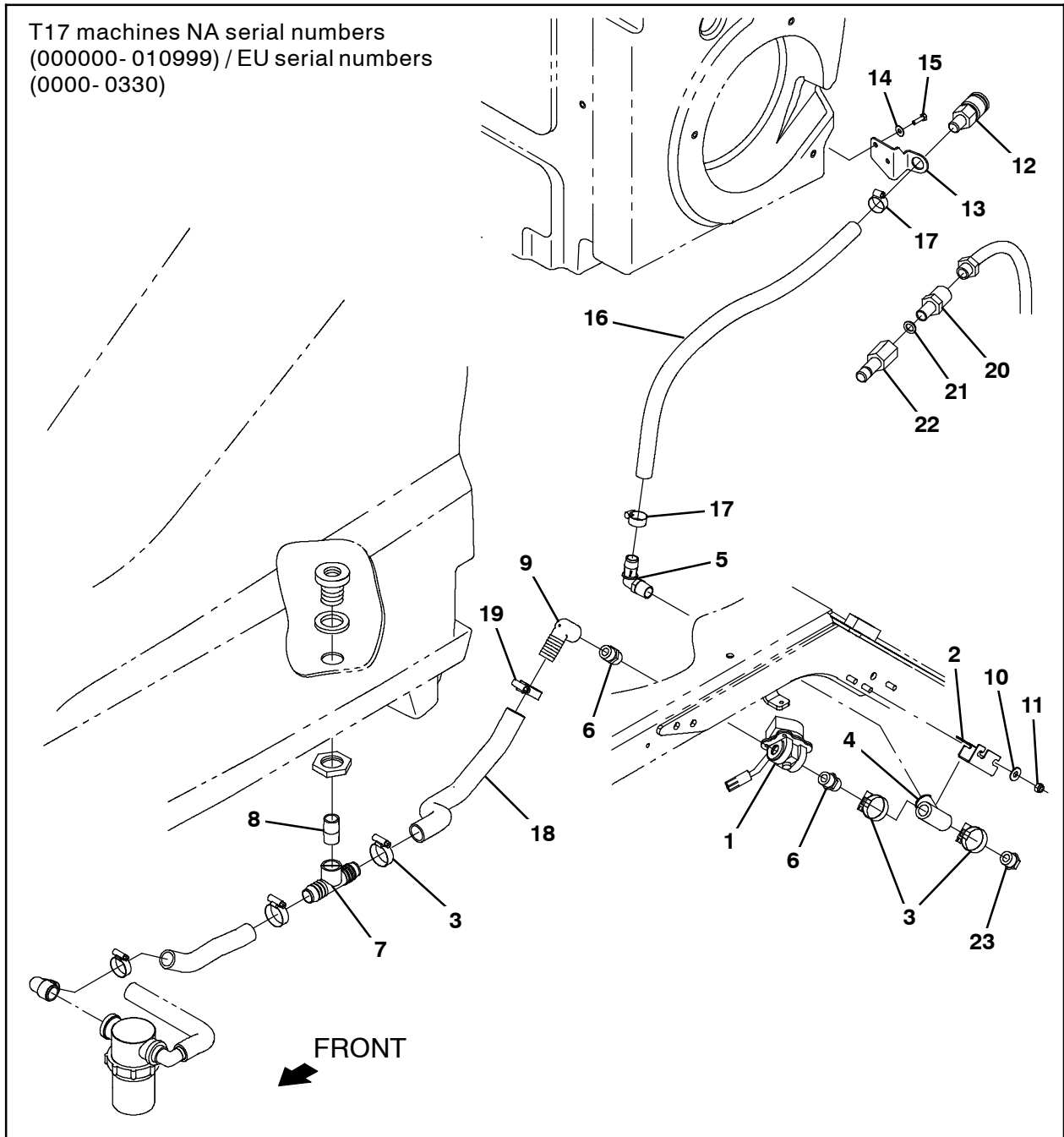


FIG. 9

**Bill Of Materials For Auto-Fill Kit, Solution Tank, DI [Var1] - 9020301 /
Auto-Fill Kit, Solution Tank, DI [Var1] - 9014967**

Ref.	Tennant Part No.	Description	Qty.
1	41410	Valve, Water, Solenoid, 36vdc Pf08/Pf08	1
2	1207777	Bracket, Mtg, Ftg, Auto Fill (Kit 9020301 Only)	1
2	1220430	Bracket, Mtg, Ftg, Auto Fill (Kit 9014967 Only)	1
3	11399	Clamp, Hose, Wormdrive, 0.81- 1.50d, .50w	6
4	79497	Fitting, Plstc, Tee, Pf08/Pf08/Pf08	1
5	63244- 2	Fitting, Plstc, E90, Bm12/Pm08	1
6	86508	Fitting, Plstc, Str, Pm08/Pm08	2
7	365096	Fitting, Plstc, Tee, Bm16/Pf12/Bm16, Br	1
8	69784	Fitting, Plstc, Str, Pm12/Pm12 Close (Kit 9020301 Only)	1
8	18595	Fitting, Plstc, E90, Bm16/Pm12 (Kit 9014967 Only)	2
9	1210841	Fitting, Plstc, E90, Bm16/Pf8 (Kit 9020301 Only)	1
9	10575	Fitting, Plstc, E45, Pf12/Pf12 (Kit 9014967 Only)	1
10	01685	Washer, Flat, 0.38b 0.88d .08, SS	2
11	08713	Nut, Hex, Lock, M8 X 1.25, NI, SS	2
12	24105	Fitting, Brs, QDC, Bm12/Qf08	1
13	1208043	Bracket, Mtg, Fitting, Qdc	1
14	01684	Washer, Flat, 0.27b 0.69d .05, SS	2
15	12277	Screw, Hex, M6 X 1.00 X 20, NI, SS (Kit 9020301 Only)	2
15	11329	Screw, Hex, M6 X 1.00 X 16, NI, SS (Kit 9014967 Only)	2
16	1040945	Hose, PVC, Wir, 0.75id, 1.00od, Bulk, Clr (45.6 in. / 1158 mm)	1
17	63810	Clamp, Hose, Wormdrive, 0.56- 1.06d, .56w	2
18	1211855	Hose, PVC, Wire, 1.00ld, 1.32od, Bulk, Clr (24 in. / 610 mm)	3
19	57379	Fitting, Plstc, Str, Bm16/Pm12 (Kit 9014967 Only)	1
20	375321	Fitting, Brs, Str, Pm08/Garden Hose	1
21	01316	Washer, Flat, 0.66b 1.00d .12, Rbr	1
22	33295	Fitting, Brs, QDC, Pf08	1
23	17521	Fitting, Pipe, Plug, Pm08, Sq Head	1
24	1005218	Fitting, Plstc, Str, Pm08/Pm12, Nyl (Kit 9014967 Only)	1

TENNANT COMPANY
P. O. Box 1452
Minneapolis, MN 55440-1452